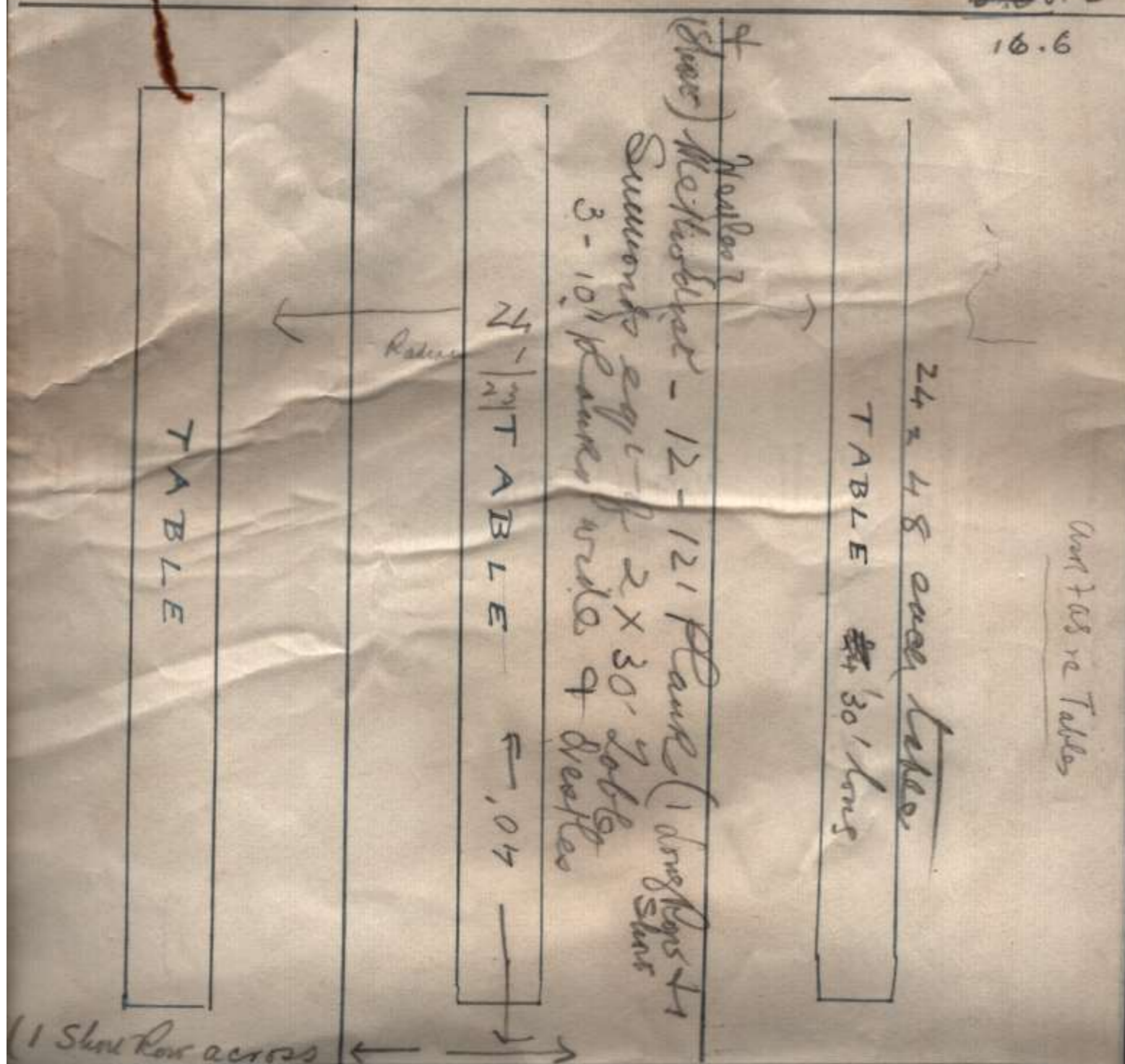


PLATFORM.

Table 2' 6"  
Chair or Seat 3.0  
5.65.2

16.6



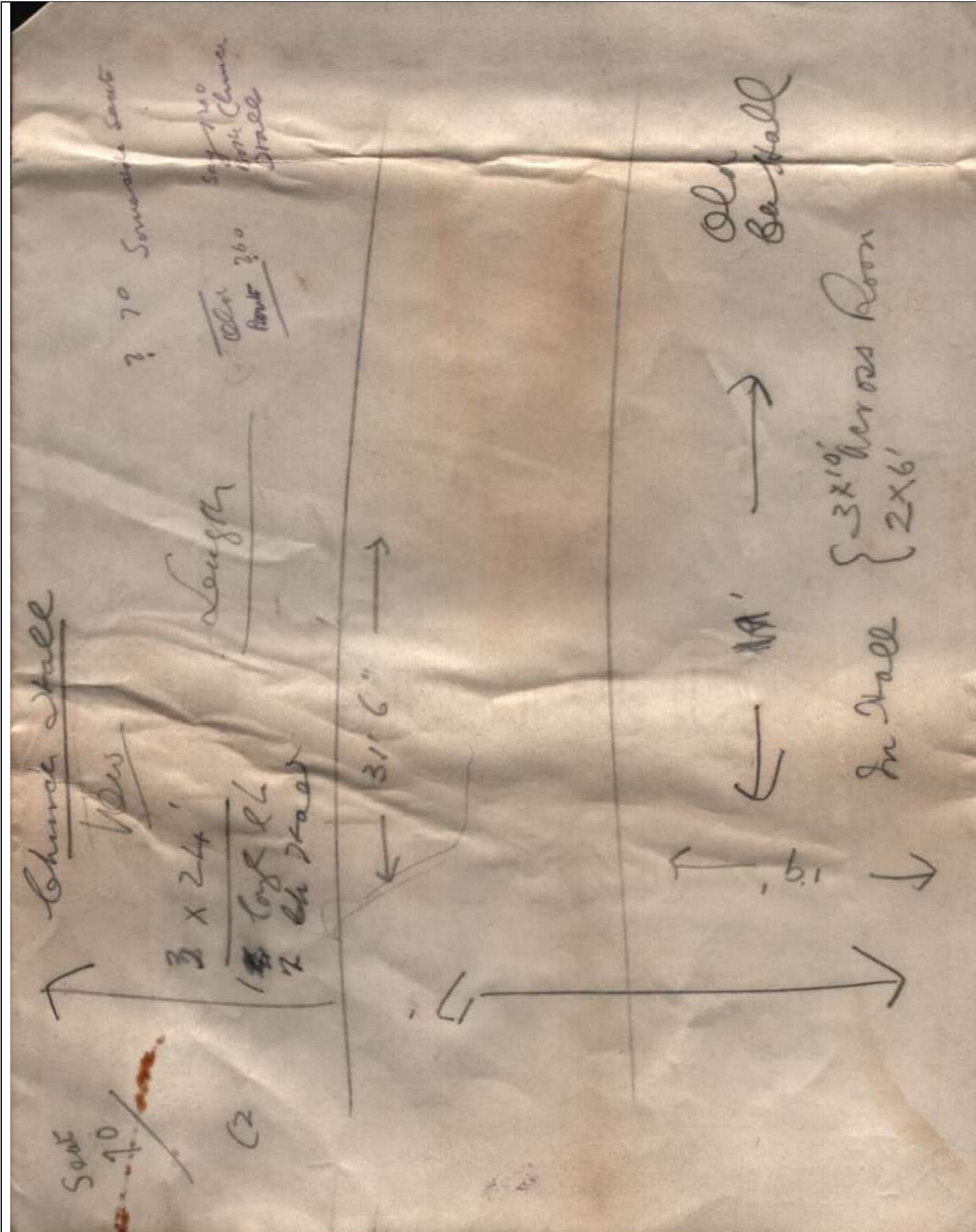
over 708 re Tables

(1 Shelving across)

DOOR

48 long  
144  
24  
168

140 on  
2 tables  
1 across  
24 in  
all



Page 2 = Sketch Plan showing layout of tables in Church Hall for Coronation Tea 12<sup>th</sup> May 1937